



**Product:**

SSMD11SS

**Specification:**

220-240V~50Hz  
Max. 13A

**Pack Contents:**

Power Station x 1  
Fixing pack x 1  
Instruction leaflet x 1



**In Desk Power and USB Module**

**INSTALLATION INSTRUCTION**

**PLEASE READ THESE BEFORE COMMENCING INSTALLATION AND RETAIN FOR FUTURE REFERENCE.**

- If the external flexible cable or cord of this socket is damage, it shall be exclusively replaced by the manufacturer or his service agent or similar qualified person in order to avoid a hazard.
- This is a Class I product. Must earth.
- If in doubt regarding these installations, consult a qualified electrician.
- CAUTION: Risk of Electric Shock - For indoor use only

**USB CHARGER SPECIFICATION**

- Output Voltage : 5VDC
- Single USB Quick charge output:  
5.0V===, 3.0A, 15.0W/ 9.0V===, 2.0A, 18.0W/ 12.0V===, 1.5A, 18.0W
- Single USB charge output:5.0V===, Max.3.0A, 15.0W
- Dual USB charge output: 5.0V===, Max.4.0A, 20.0W

**CAUTION :**

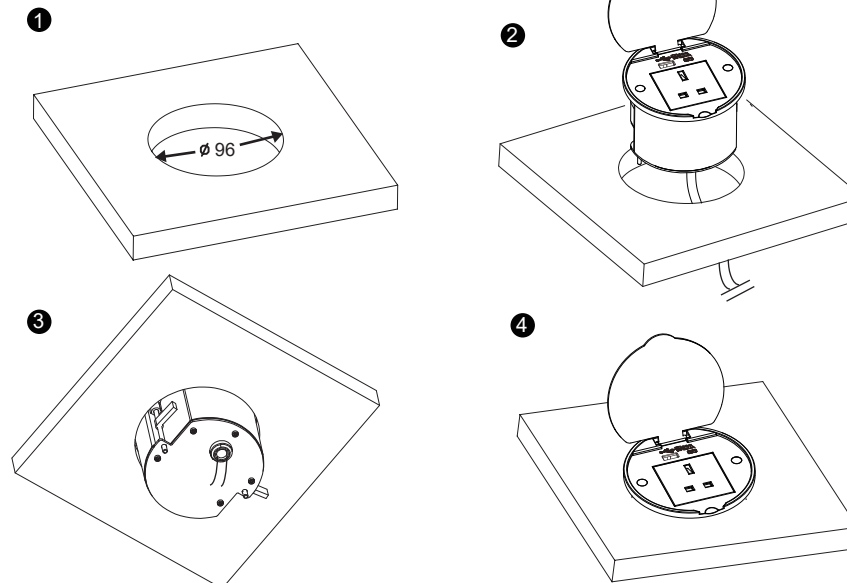
- It is not applicable for the digital products with internal protection or the ones requiring driving programme
- The USB outlets are for use only with Audio Visual and Information Technology and Communication equipment

**MAINTENANCE**

- Ensure that to disconnect the power prior to cleaning.
- To keep the finish of this product, wipe over with soft cloth periodically.
- Clean the socket with a damp cloth and mild detergent, dry immediately.
- Do not use harsh chemical solvents, it may dis-color or damage the finish.

**INSTALLATION**

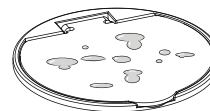
The installation may only be carried out by an electrical specialist in accordance with international and national standards.



- 1 Cut out 96 mm diameter hole in work surface. Allow minimum 25mm clearance surround the cut hole.  
\* Mounting Board Thickness : Min.14mm - Max.50mm
- 2 Insert product into the hole.
- 3 Tighten the screws ,the bottom of component will fix the board .
- 4 Install the protective screw cap cover.
- 5 Connect cable to power supply, once work has been completed correctly, the product is now ready to use.

Cores or conductors in the mains shall be coloured in accordance with the following code:

Green-and-yellow	Earth (if any)
Blue	Neutral
Brown	Line



**\* IP44 can only take effect when the cover in closed position.**